

# M SERIES

Advanced thermal imaging camera with full function analysis

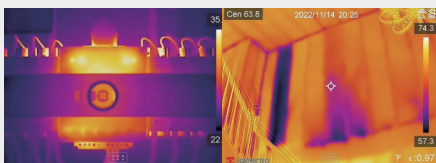


**SuperIR**



### Multiple Product Options

M series products provide wide-angle and manual focus options. The manual focus with a larger focal length option (without "W") is ideal for electrical, HVAC, and mechanical inspection where focusing on specific components is critical. The "W" series features a fixed focus wide FOV making them ideal for scanning walls, floors, and large-scale items.

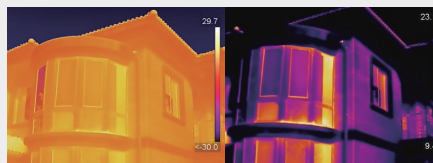


Without "W"

With "W"

### 1-Tap Level & Span

Quickly highlights the area of the image you are interested in by narrowing the span with one tap on the **3.5" LCD touchscreen**, instantly improving image contrast and highlighting potential problems.



Auto Level & Span

Manual / 1-Tap Level & Span

### Interchangeable Battery System

Includes **2 interchangeable Li-ion batteries** and a dual bay charger to provide you with **up to 12 hours** of operation. You can stay powered up for even the longest inspections.



2 interchangeable Li-ion batteries



### On-camera Analysis

Offers 17 measurement rules, 7 color alarm palettes and 4 image modes for powerful on-camera analysis.



### Camera Interface

Intuitive 3.5" LCD Touch Screen or interactive buttons to easily navigate to any function. Use either or both!



### Multiple Image Annotations

Support voice, text, and QR Code Scan annotations, helping to improve inspection efficiency and productivity.

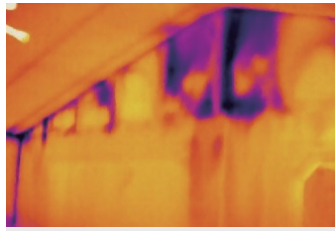
## APPLICATIONS



Check Electrical



Check Underfloor Heating



Check Building Insulation



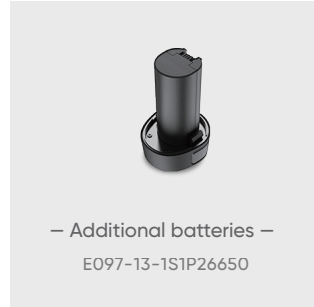
Check Mechanical Status

## WHAT'S IN THE BOX



- Thermal Imager with Wrist Strap
- Interchangeable and Rechargeable Li-ion Batteries (x2)
- Power Supply for Battery Charger
- Two-bay Battery Charger
- International Use Plugs (US/EU/UK/AU) for Power Supply (x4)
- USB 2.0 A to USB Type-C Cable
- Hard Carrying Case
- Calibration Certificate / Quick Start Guide
- 16GB Micro SD card(M10/M20/M20W) / 64GB Micro SD card(M30)

## OPTIONAL ACCESSORIES



– Additional batteries –  
E097-13-1S1P26650



– Pouch –  
HM-SP01-POUCH



– Replacement Charger –  
HM-5202ZC

Model No	M11	M11W	M20W	M20	M30	M60
IR Resolution	192 x 144 (27,648 pixels)	192 x 144 (27,648 pixels)	256 x 192 (49,152 pixels)	256 x 192 (49,152 pixels)	384 x 288 (110,592 pixels)	640 x 480 (307,200 pixels)
SuperIR	192 x 144 (27,648 pixels)	192 x 144 (27,648 pixels)	512 x 384 (196,608 pixels)	512 x 384 (196,608 pixels)	768 x 576 (442,368 pixels)	1280 x 960 (1,228,800 pixels)
NETD	< 40 mK (@ 25 °C, F#=1.0)				< 35 mK (@ 25 °C, F#=1.0)	
Focal Length	6.9mm	3.6mm	3.5mm	6.9mm	10mm	15mm
FOV	18.8° x 14.1°	37.2° x 27.8°	50° x 37.2°	25° x 18.8°	37.5° x 28.5°	41.9° x 33.3°
Focus	Manual Focus	Focus Free	Focus Free	Manual Focus	Manual Focus	Manual Focus
Visual Camera	3264 x 2448 (8 MP)					
Min. Focusing Distance	0.1 m (0.33 ft)	0.5 m (1.64 ft)	0.5 m (1.64 ft)	0.1 m (0.33 ft)	0.2 m (0.33 ft)	0.3 m (0.98 ft)
Object Temp. Range	-20 °C to 550 °C (-4 °F to 1022 °F)					-20 °C to 650 °C (-4 °F to 1202 °F)
Accuracy	Max. (± 2°C/3.6°F, ± 2%), for ambient temperature 15°C to 35°C (59°F to 95°F) and object temperature above 0°C (32°F)					
Wi-Fi	802.11 b/g/n (2.4 GHz and 5 GHz)					
Storage	Default Storage: Removable SD Card (16 GB) ; Max. Storage Capacity: 128 GB				Default Storage: Removable SD Card (64 GB) ; Max. Storage Capacity: 128 GB	
Battery Operating Time	Approx. 6 hours x 2	Approx. 6 hours x 2	Approx. 6 hours x 2	Approx. 6 hours x 2	Approx. 4 hours x 2	Approx. 4 hours x 2

HIKMICRO Thermography  
 info@hikmicrotech.com

hikmicro\_thermography  
 support@hikmicrotech.com

HIKMICRO Thermography  
 HIKMICRO



www.hikmicrotech.com

Aufgrund laufender Weiterentwicklungen sind Änderungen der Spezifikationen vorbehalten. Alle Angaben vorbehaltlich Satz- und Druckfehler.

**nbn Austria GmbH**

Riesstraße 146, 8010 Graz

+43 316 40 28 05

info@nbn.at | www.nbn.at

