

Accessories for DLM3000/5000 series

Miniature Passive Probe **701949**

The Ideal Accessory for High-density IC and PCB Measurements

Compact design, probe tip with spring mechanism

- The slim probe head provides better visibility.
- The probe tip utilizes a spring mechanism to absorb stress and to prevent slipping.

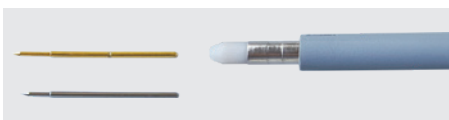
Wealth of accessories

- Accessory system specially designed for probing ICs and high-density integrated PCBs.
- Unique Two-footer probe positioner enables hands-free, multi-channel measurement.

Compatible with DLM3000/5000 probe replacement option

For DLM3000, it is possible to specify 701949 probe as a substitute for the 701937 standard probe (Optional).

Two types of probe tips (Interchangeable)



Upper: Spring tip
Lower: Rigid tip

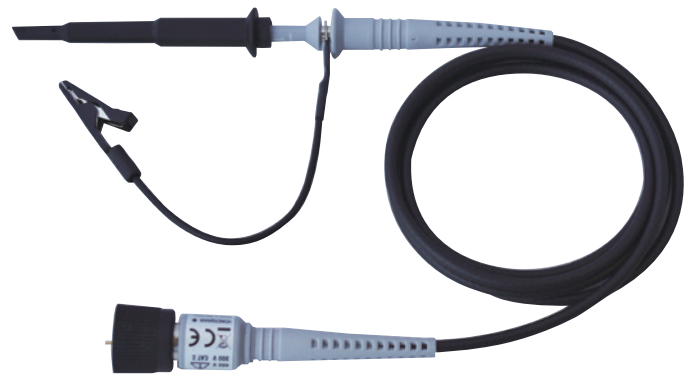
IC contacting system



IC caps (0.5 mm to 1.27 mm pitch)



Ground blade, Adhesive Cu sheet



701949 500 MHz Miniature Passive Probe



701949 500 MHz Miniature Passive Probe and accessories

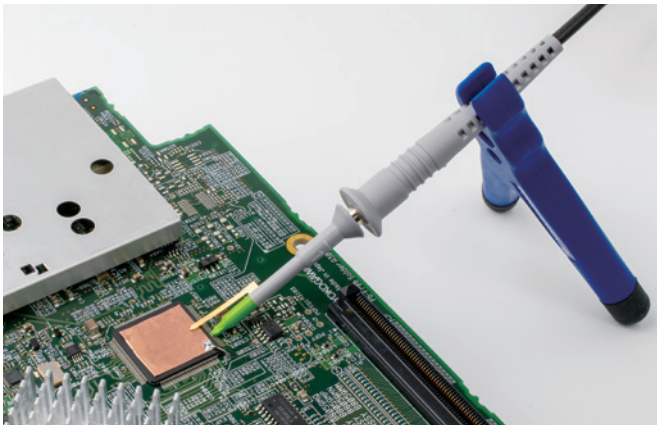


Example of IC measurement

For hands-free, multi-channel measurement.

Two-footer probe positioner

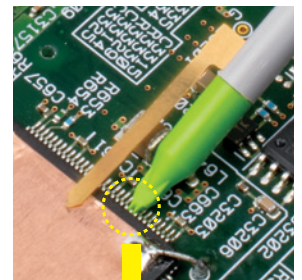
The weighted Two-footer probe positioner, along with the spring mechanism of the probe tip, enables hands-free yet secure contact to DUTs. This positioner is especially effective when measuring multiple channels on high-density integrated PCBs.



Enables short and easy-to-use ground connection.

Adhesive Cu sheet, Ground blade

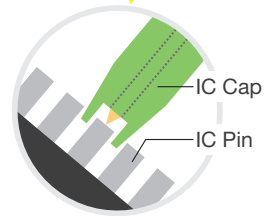
When measuring signals that contain high frequency components, to reduce the ringing caused by standard ground lead inductance, it is important to reduce the length of the ground connection. By attaching one of the included adhesive Cu sheet to the top of the IC, connecting the Cu sheet to the ground pin, and installing the ground blade on the probe, you can minimize the length of the ground connection.



Enables safety contact to pins of fine-pitch ICs.

IC Cap

By using the included IC caps, you can easily make connections to the pins of fine-pitch ICs. There are five types of IC caps included. These IC caps have a pitch ranging from 0.5 mm to 1.27 mm.



Specifications

| Item | Specificaiton |
|--------------------------------|--|
| Supported Model | DLM3000/5000 series |
| Frequency Band | DC to 500 MHz (-3 dB) |
| Connector type | BNC (with the probe ID pin) |
| Input resistance/Capacitance*1 | 10 MΩ±1% / 9.5 pF (typical) |
| Maximum input voltage | ±400 Vrms |
| Operating temperature range | 0°C to +50°C |
| Probe Length | 1.3 m (without pinchar tip) |
| Attenuation ratio*1 | 10:1 ±2% (DC) |
| Standard Parts | Pincher tip, Spring tip, Rigid tip, IC cap (Five types), Insulation cap, Protection cap, Ground lead, Ground spring, Ground blade, Cu sheets, PCB adapter kit, Marker tips, Adjustment screwdriver, Two-footer probe positioner, Manuals |

*1: In conjunction with a measuring instrument with an input impedance of 1 MΩ±1%.

Model

| Model | Name |
|--------|-------------------------|
| 701949 | Miniature passive probe |

DLM3000 series suffix codes

| Suffix code | Description |
|-------------|--|
| /EX4 | Replace all probes with 701949 (4 ch model only) |
| /EX2 | Replace all probes with 701949 (2 ch model only) |

The 701937 probes are not included when these options are selected.

DLM5000 series suffix codes

| Suffix code | Description |
|-------------|---|
| /E2 | Attach four 701949 probes |
| /E3 | Attach eight 701949 probes (for 8 ch model) |

The 701937 probes are not included when these options are selected.



YOKOGAWA TEST & MEASUREMENT CORPORATION
Global Sales Dept. /E-mail: tm@cs.jp.yokogawa.com

YOKOGAWA CORPORATION OF AMERICA
YOKOGAWA EUROPE B.V.
YOKOGAWA TEST & MEASUREMENT (SHANGHAI) CO., LTD.
YOKOGAWA ELECTRIC KOREA CO., LTD.
YOKOGAWA ENGINEERING ASIA PTE. LTD.
YOKOGAWA INDIA LTD.
YOKOGAWA ELECTRIC CIS LTD.
YOKOGAWA AMERICA DO SUL LTDA.
YOKOGAWA MIDDLE EAST & AFRICA B.S.C(c)

<https://tmi.yokogawa.com/us/>
<https://tmi.yokogawa.com/eu/>
<https://tmi.yokogawa.com/cn/>
<https://tmi.yokogawa.com/kr/>
<https://tmi.yokogawa.com/sg/>
<https://tmi.yokogawa.com/in/>
<https://tmi.yokogawa.com/ru/>
<https://tmi.yokogawa.com/br/>
<https://tmi.yokogawa.com/bh/>

<https://tmi.yokogawa.com/>

YMI-N-MI-M-E03

The contents are as of March 2023. Subject to change without notice.
Copyright © 2020, Yokogawa Test & Measurement Corporation
[Ed: 02/b]